

# WING COMMANDER III

## Heart of the Tiger

### PLAYGUIDE



**DOLBY SURROUND**

**ORIGIN**  
We create worlds.  
An Electronic Arts® Company  
12940 Research Blvd • Austin, TX 78750-3235



EA 10095-05

©Copyright, 1995, ORIGIN Systems, Inc. Origin, We create worlds and Wing Commander are registered trademarks of ORIGIN Systems, Inc. Heart of the Tiger is a trademark of ORIGIN Systems, Inc. Electronic Arts is a registered trademark of Electronic Arts. 3DO, the 3DO logos and Interactive Multiplayer are trademarks of The 3DO Company. Dolby and the double-D symbol are trademarks of Dolby Licensing Corporation.

## WING COMMANDER III 3DO PLAYGUIDE

### TABLE OF CONTENTS

<b>Starting the Game</b> .....1	Radar Display.....15
Choosing a Controller.....1	Left VDU.....16
Symbol Definitions.....3	Right VDU.....18
On the Carrier.....3	Gun Power Indicator.....18
Maneuvering your Ship.....3	Afterburner Fuel Indicator.....19
Saving, Loading and Exiting.....4	Set Speed.....19
<b>Quick Start</b> .....5	Current Speed.....19
<b>Onboard the Victory</b> .....6	Active Gun(s).....20
Main Terminal.....6	Active Missile.....20
Talking to Characters.....6	Autopilot Light.....21
Lift.....6	Missile Lock Light.....21
Bridge.....7	Jump Light.....21
Gunnery.....7	<b>Navigation</b> .....22
Rec Room.....8	<b>Targeting</b> .....23
Killboard.....8	Inertial Targeting and Tracking System (I.T.T.S.).....23
News Terminal.....8	Missile Lock.....24
Berths.....9	<b>Damage</b> .....25
Flight Control.....10	Eject Warning.....25
Simulator.....11	<b>Takeoffs and Landings</b> .....26
Loadout Terminal.....12	<b>Cloaking</b> .....27
Mission Briefing Room.....12	<b>Dying</b> .....27
<b>In the Cockpit</b> .....13	<b>Main Terminal Options</b> .....28
Cockpit Instruments.....13	<b>Getting the Most out of Wing Commander III</b> ..29
Viewscreen.....14	
Gunsight.....15	

### STARTING THE GAME

To begin *Wing Commander III 3DO*, turn on power to the 3DO machine (if necessary, refer to your 3DO manual). Open the CD-ROM drive and insert the 3DO disk. After you close the drive, the game will play an introductory scene. (To bypass movies, press **□**, or **Ⓢ** on the joystick.)

The first time you activate a Main Terminal (see p. 6), you'll see the collsign screen. To enter your name, move the cursor over each appropriate letter and press **Ⓐ** to select that letter. (You can enter up to 15 characters.) When you're finished, select ENTER.

### CHOOSING A CONTROLLER

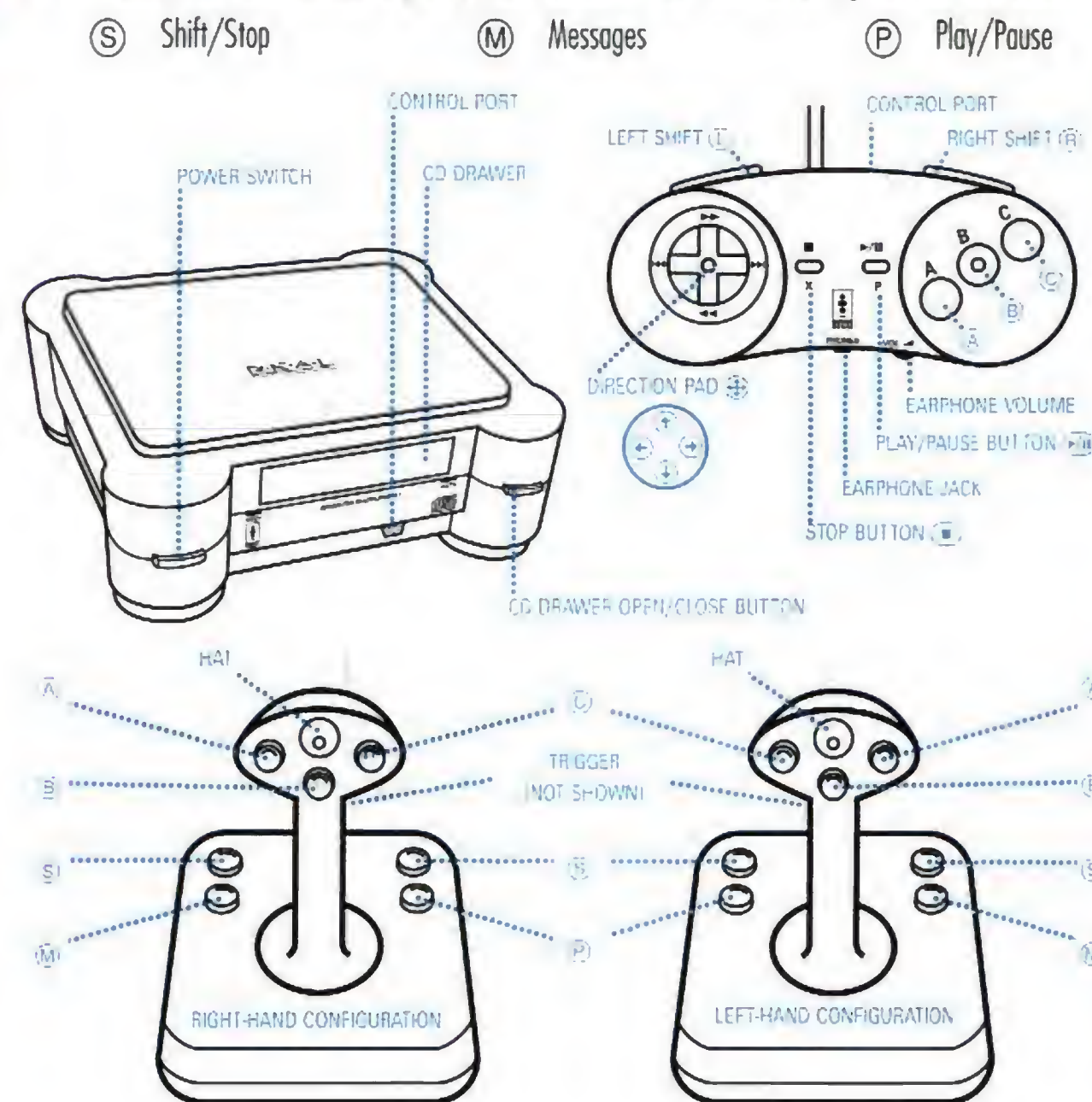
You can use a 3DO keypad controller or the Flightstick Pro 3DO joystick to move your cursor and fly your ship. The game automatically detects a joystick when you plug one in. You can use both the keypad and the joystick while on the carrier. Shipflight control, however, defaults to the joystick when one is connected.

The following diagrams show the controls on the 3DO keypad and joystick. This playguide gives the standard 3DO keypad combinations. If the joystick command is different, it is listed as well. Please see the reference card for a complete listing of all keypad and joystick commands.

The default configuration for your joystick is right-handed. To switch your joystick to a left-handed configuration, select JOYSTICK CONFIGURATION from the Main Terminal CONTROLS screen, then select LEFT-HANDED. This function switches the **Ⓜ** and **Ⓟ** buttons, and also switches **Ⓐ** and **Ⓒ**.



Here's a handy tool for remembering the joystick buttons. (Note that the two **S** buttons are identical.)



## SYMBOL DEFINITIONS

- A** Press the indicated key once.
- ⊕** Move the Direction Pad (D-pad) or joystick to change options (on the carrier), change the nav map view and steer your ship (during flight). The symbols **⬆**, **⬇**, **⬅** and **➡** indicate specific directions when moving the D-pad or joystick.
- B** **⬆** Press and hold the first key, followed by the second key. Here, you would hold down **B** while pressing **⬆** (press "up" on the D-pad, or push the joystick away from you).

## ON THE CARRIER

- ⊕** **Choose an action.** Move the direction pad (**⊕**) or joystick to position the cursor over an object or person. Alternatively, the **L** and **R** buttons on the keypad (or joystick hat switch) cycle through action spots on the screen.

You'll see the option on the screen — for example, **Talk to Hobbes**, **Go to Lift**, **Attend Briefing**, **Activate Main Terminal**, etc.

Note: You can toggle onscreen text on and off through the Main Terminal (see **Main Terminal**, p. 28).

- A** **Begin selected action.** Press **A** (or the joystick trigger) to activate the option you've chosen. (**A**, **B** or **C** will work. However, this guide always lists **A**.)

## MANEUVERING YOUR SHIP

During flight, press **⬆** or **⬇** on the D-pad or joystick to move your ship up or down. Press **➡** or **⬅** to bank right or left.

To roll your ship right or left along its axis without changing course, press **B** **➡** or **B** **⬅**.

## SAVING, LOADING AND EXITING

You can only save from the carrier or from a depot. Go to Flight Control, the Berths or the Bridge and choose the Main Terminal (see p. 6). Then, choose **DUTY LOGS**.

**Saving games.** The game automatically saves before every mission, but you can also manually save games. To do so, select **SAVE**, then highlight one of the five game slots and press **A**. Then, press **A** to save the game in that slot, or **C** to cancel. The game will record the series and mission number, the number of kills you've accumulated and the ship morale level. You can save up to 5 games and can delete or overwrite filled slots.

**Loading saved games.** Highlight **LOAD** and press **A**. Then, highlight an occupied game slot and press **A** to load that game, or **C** to cancel.

**Deleting saved games.** To remove saved games, highlight **DELETE** and press **A**. Then, highlight an occupied game slot and press **A**. Press **A** again to confirm the deletion, **C** to cancel it.

**STORAGE MANAGER.** Select **STORAGE MANAGER** to access saved games from another game title. At the **STORAGE MANAGER** screen, use **⬆** to highlight a saved game slot. Press **A** to remove the game from memory, or **C** to open a help screen. Press **A** to confirm, **C** to cancel. Press **■** when you're done.

Note: If you can't save games, your **STORAGE MANAGER** slots may be full. Try deleting one or more saved games from other titles, then try again to save a Wing Commander III game.

**WARNING:** If you delete saved games from other titles through **STORAGE MANAGER**, they will not be available next time you play that game.

Whenever you insert CDs #2, #3 or #4 into the 3DO machine, a Main Terminal screen automatically appears. You must select **NEW GAME** (to start a new game), **CONTINUE** (to resume the game you were playing previously), or **LOAD GAME** (to load a previously saved game).

## QUICK START

When the game begins, you're on the Flight Deck. Move the cursor around on the screen. When text appears, you may begin that action (press **A**).

Move the cursor up/down (**⬆**, **⬇**) to choose responses during conversations, then press **A**.

To go directly into a mission, select **Attend Briefing** on the Flight Level. However, we recommend that you follow these steps before entering your first mission:

1. **Go to Flight Control.**
2. **Talk to Hobbes** (move the cursor over him and press **A**).
3. **Go to Lift.**
4. **Go to Living Level** (choose the green box) and watch the scene between Cobra and Hobbes.
5. **Talk to Vagabond.**
6. **Go to Lift.**
7. **Go to Bridge Level** (choose the red box).
8. **Talk to Maniac.**
9. **Go to Gunnery.**
10. **Talk to Flint.**
11. **Go to Lift.**
12. **Go to Flight Level** (choose the yellow box).
13. **Attend Briefing.** You'll be briefed on your mission. Then, you'll brief the pilots and choose a wingman. Hobbes is your only choice now. Later, you can select anyone you've talked to that is still alive.
14. **Talk to Rachel** about ship loadouts.
15. **Fly Mission** to enter the launch bay and automatically take off. (See pp. 13-21 for cockpit instrumentation.)

## ONBOARD THE VICTORY

### MAIN TERMINAL

Main Terminal monitors are located on each level. (The depots in the final mission also have a terminal.) When you select a monitor, it displays a close-up of the computer, with a menu onscreen. Move the cursor over the option you want, then press (A). To cancel the screen, choose LOGOFF.

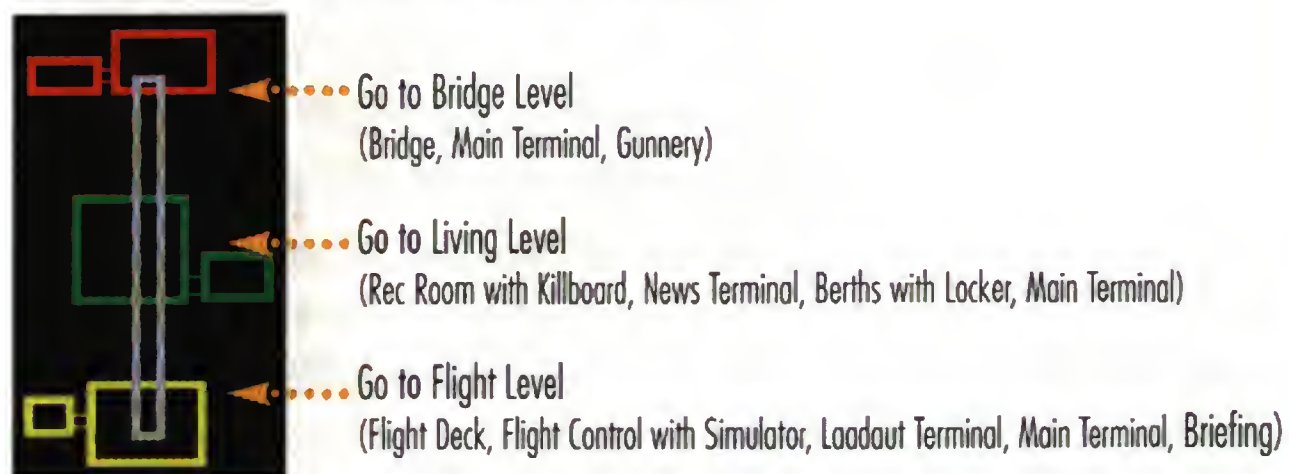
For a complete description of Main Terminal options, see pp. 28-29.

### TALKING TO CHARACTERS

To talk with someone you meet, move the cursor over that person and press (A). Sometimes, the game pauses and displays two choices. Move the keypad (or joystick) up or down to choose an answer, then press (A). Certain responses raise individual or group morale, and others lower it. Morale, in turn, affects the plot and how your wingmen behave in space flight.

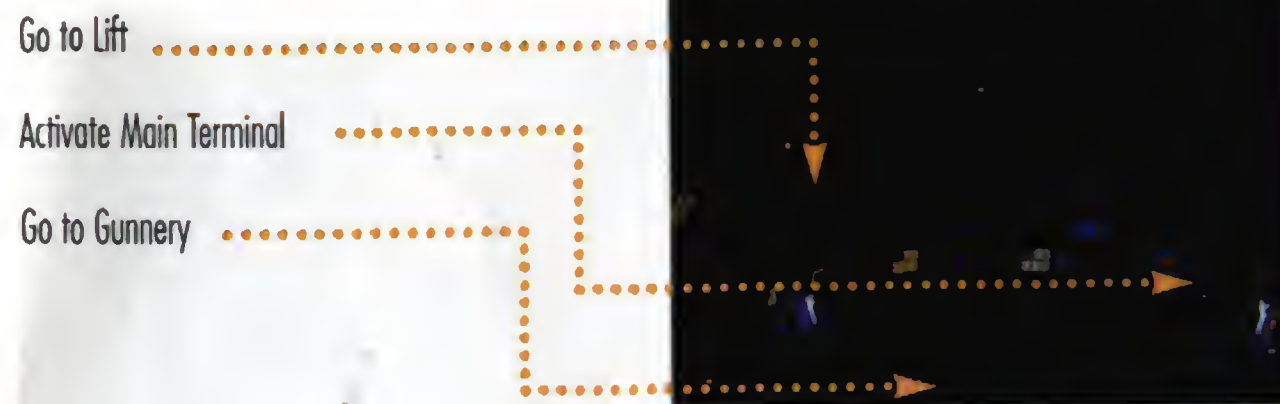
### LIFT

The Lift transports you between the *Victory's* three decks.



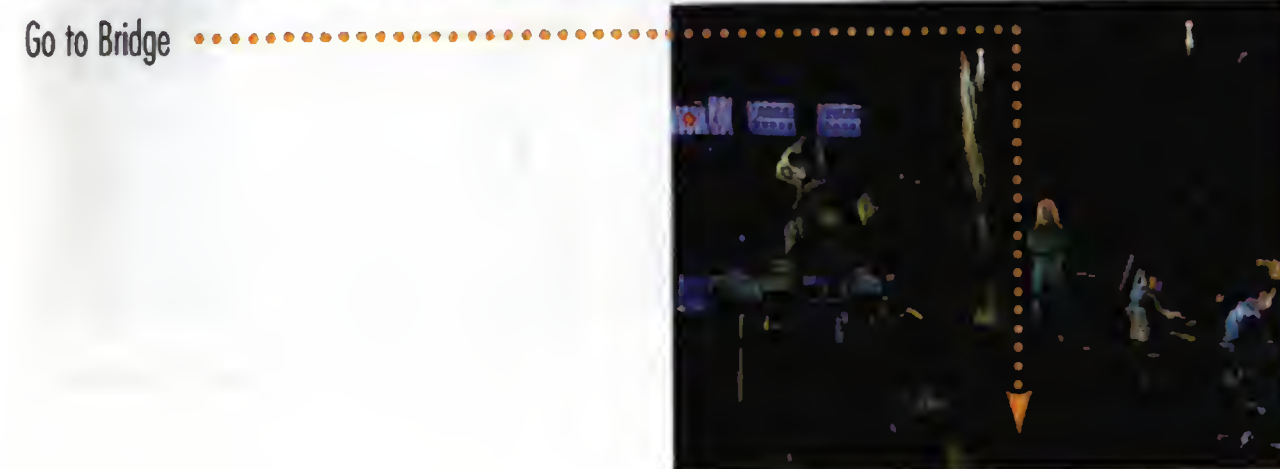
### BRIDGE

The Bridge is the center of all *Victory* operations. From here, you can access both the Lift and Gunnery.



### GUNNERY

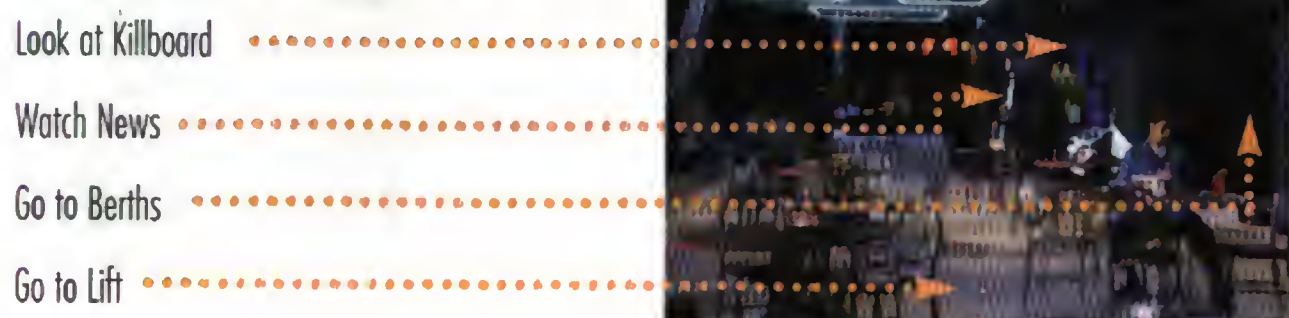
In Gunnery, you'll often find your crewmates deep in thought as they survey the galaxy.



### REC ROOM

The Rec Room lounge is a common hangout for off-duty crew members. Here, you can talk over strategies with other pilots, access the Berths, watch newscasts on the News Terminal, or look at the Killboard.

Talk to characters  
(those present change during the game)



### KILLBOARD

The Killboard terminal in the Rec Room displays the number of kills for each surviving pilot. Your callsign appears last on the list. As you complete missions and destroy enemy pilots, your number in the "Kills" column increases.

### NEWS TERMINAL

The News Terminal in the Rec Room broadcasts news briefings throughout the game to keep you informed about the progress of the war. You can use the News Terminal only at certain times, and the newscasts change as the game progresses.

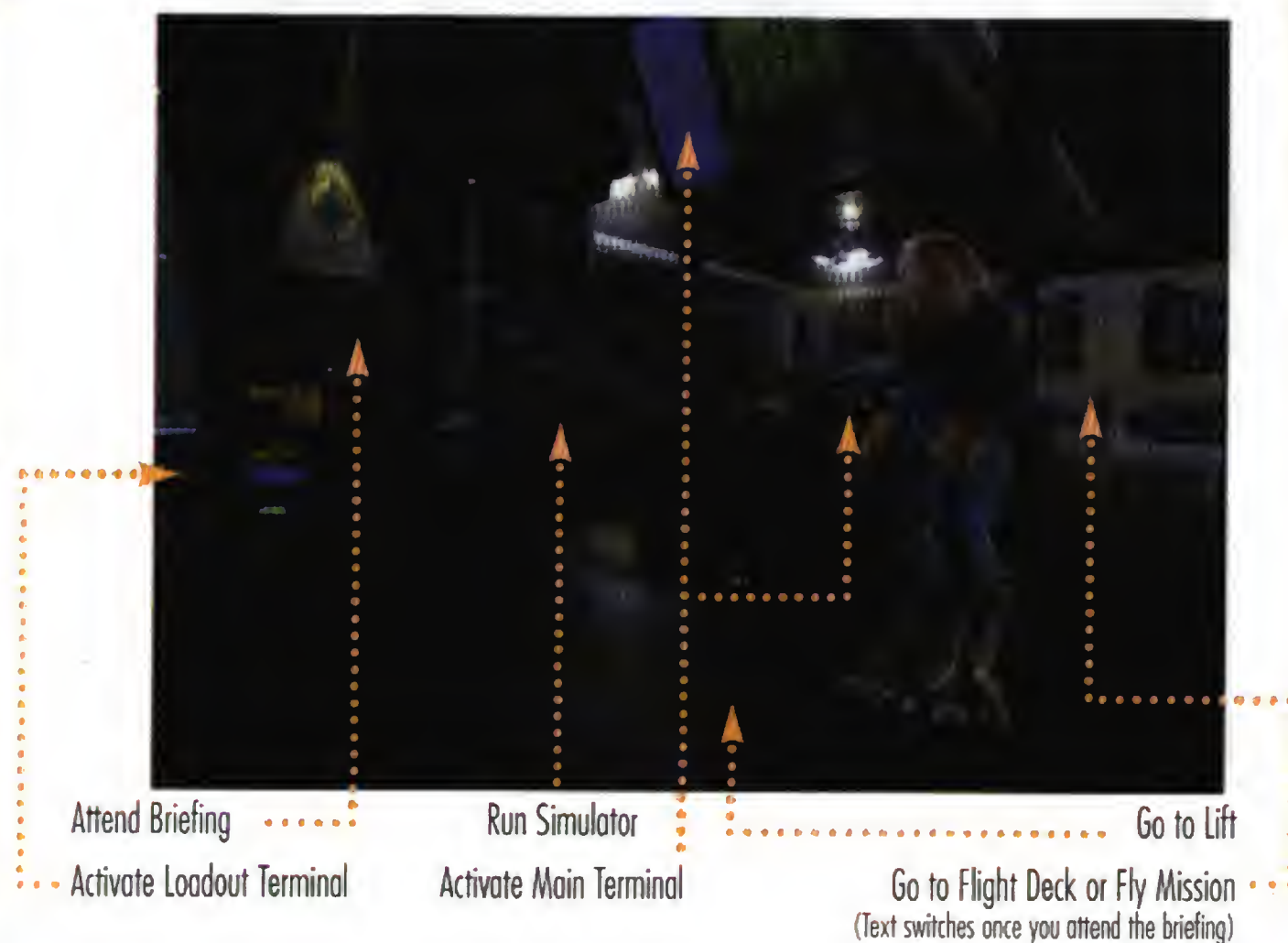
### BERTHS

With its standard cot-and-locker arrangements, the *Victory's* barracks room is sparse but functional. You can look in your Locker or talk with other pilots who may appear.



## FLIGHT CONTROL

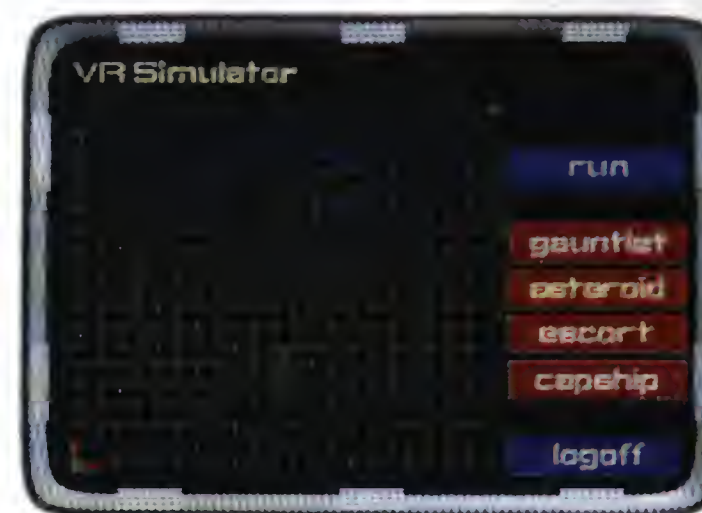
In Flight Control, you can attend mission briefings, use a Main Terminal monitor, fly simulator missions and take the stairs down to the Flight Deck. After your first mission, you have the option of using the Loadout Terminal in Flight Control to pick a ship and its loadout. Once you view the mission briefing, you can't use the Lift, but the Loadout Terminal is still available.



## SIMULATOR

You can use the simulator to brush up on your flying skills.

Select the large chair in Flight Control (to the right of the Briefing Room) to display the simulator screen. Move the cursor over a button to select a mission type (GAUNTLET, ASTEROID, ESCORT or CAPSHIP). Then, press **(A)** to display a short description of the mission.



**GAUNTLET.** Fly through four navigational points and face increasingly difficult waves of enemies.

**ASTEROID.** Fight three enemy ships in an asteroid field.

**ESCORT.** With a wingman, escort and defend a transport against enemy ships.

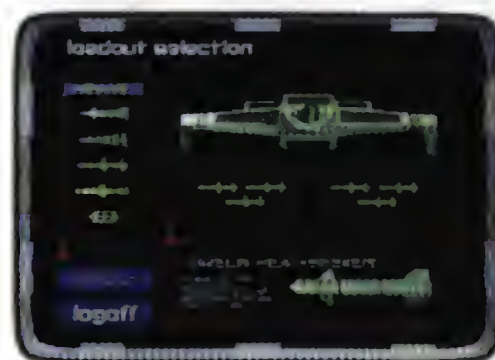
**CAPSHIP.** With a wingman, attack an enemy cruiser and its fighter escorts.

**RUN.** Begin simulator mission.

**LOGOFF.** Abort simulation and return to the normal game screen.

## LOADOUT TERMINAL

Rachel will select weapons for your first mission. Later, you can pick ships and specify weapon loadouts by selecting the Loadout Terminal in Flight Control.



- Select the red arrows to change the ship type.
- Once you choose a ship, select **CONFIGURE LOADOUT** to display the missile hardpoints (represented by green boxes) and missile types. The number of hardpoints varies between ships. Light hardpoints can only carry Heat-Seeking and Dumbfire missiles; heavy hardpoints can carry anything (including mines). Some ships have locked hardpoints (outlined with red boxes) that cannot be changed.
- To switch missiles, select a green hardpoint box. Then, select the missile type you want to load onto that hardpoint.
- To change the loadout back to the default setting, select **DEFAULT**.
- Choose **LOGOFF** to close the terminal screen and load the new ordnance onto your ship.

## MISSION BRIEFING ROOM

Prior to each mission, you attend a mission briefing. You'll be briefed by your superiors about the flight path and mission objectives. Then, you'll brief your squadron and pick a wingman by moving the cursor over the person and pressing **(A)**. Available wingmen change with each mission, and you must talk to someone before he or she can be selected.

## IN THE COCKPIT

When you choose Fly Mission in Flight Control and enter a mission, your ship launches automatically. You'll see space directly ahead of you through the front viewscreen of the cockpit and an instrument panel in front of you. All five fighters you fly feature the same instruments, even though gauge positions and screens vary between ships.

To pause space flight, open the navigational map by pressing **(M)** **(A)** (or **(P)** **(A)**). Press **(N)** (or **(S)**) to resume flight.

## COCKPIT INSTRUMENTS *Hellcat cockpit*



1. Viewscreen
2. Gunsight
3. Radar Display
4. Left VDU
5. Right VDU
6. Gun Power Indicator
7. Afterburner Fuel Indicator
8. Set Speed
9. Current Speed
10. Active Gun(s) text
11. Active Missile text
12. Autopilot Light
13. Missile Lock Light
14. Jump Light (*Excalibur* only)
15. Nav Cross (see p. 22)

Note: Grayed-out entries in the key are not visible in this screen shot.

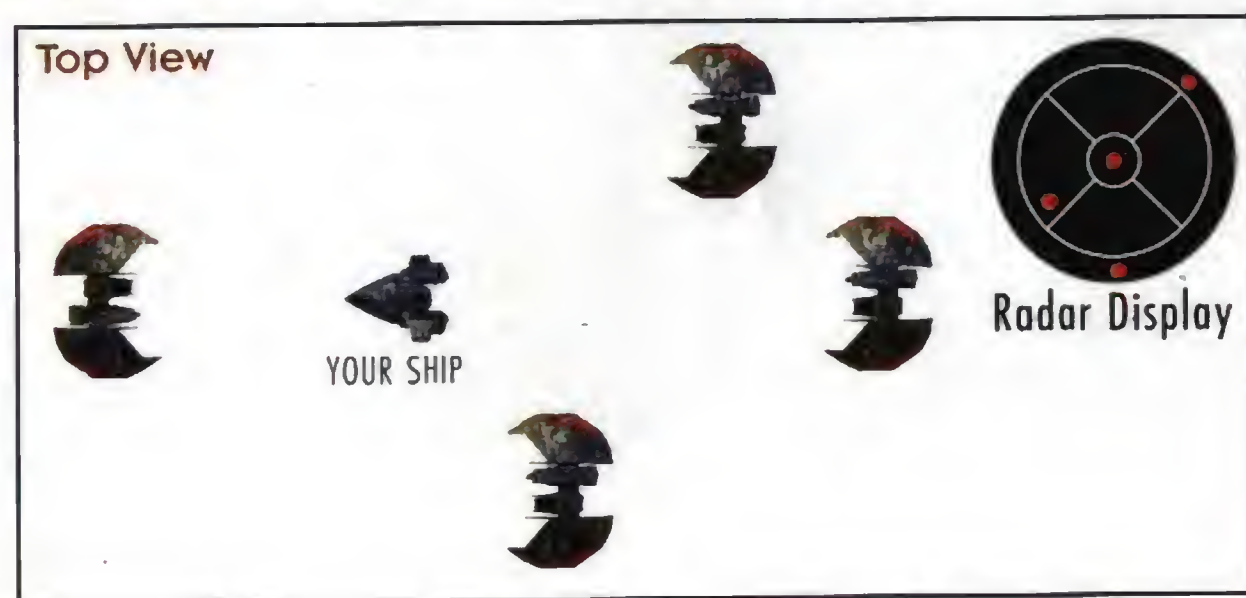
## 1. VIEWSCREEN

The front viewscreen provides a clear view directly ahead of you. The red cross hairs in the middle of the screen are your gunsight (2) and show where your ship's guns are aimed.

When other ships come in view, your computer automatically targets and locks the closest. Red brackets appear around a targeted enemy ship. A friendly targeted ship gets blue brackets. Missiles locked onto you get green brackets. Switch targets by pressing (R) (A) (or hat (←, →)). When you have a ship targeted, a profile of that ship appears in the monitor on the right side of the cockpit (the Right VDU). The profile remains in the Right VDU until you destroy the ship or it moves out of view.

**Invisible cockpit view.** To toggle the invisible cockpit view, press (V) (B) (or (P) (B)). You'll still see your instruments, but space will fill the entire screen. Press again to resume normal cockpit view.

**External object view.** You can cycle through an external view of each ship in the area by pressing (V) (C) (or (P) (C)). The viewscreen disappears, and an external camera displays the nearest ship. Use (←) to pan around the object. Press (V) (C) (or (P) (C)) again to return to the cockpit view.



## 2. GUNSIGHT. See Viewscreen (1).

## 3. RADAR DISPLAY

The radar display is divided into six sections, and each ship detected appears as a colored dot. The outer ring shows the position of ships behind you; the center circle shows ships ahead of you; and the four middle quadrants represent ship positions alongside, above or below you.

Dots are color-coded, and your current target appears as a cross of the appropriate color.

Red Dot	Enemy fighter	Light Blue Dot	Friendly capital ship
Blue Dot	Friendly fighter	Yellow Dot	Missile (friendly or enemy)
Orange Dot	Enemy capital ship	White Cross	Currently selected nav point

**Tactical Tip:** To bring an enemy target into view, find a red or orange dot on the radar. Then, maneuver your ship and center the dot in the innermost circle of your radar display. This brings the target directly in front of you and into view.



## 4. LEFT VDU

The Left Video Display Unit (VDU) normally displays shield and armor information. When you activate the communication screen, message information appears in the VDU instead.

**a. Shields and Armor.** Shields are designated by an outer set of colored bars in the Left VDU, and armor is represented by a set of inner bars. As you take damage, your shields weaken and the affected bar grows thinner. If your shield generator isn't damaged, shields will regenerate slowly. Once shields are pierced, however, armor starts taking damage and the inner brackets grow thin and disappear. Unlike shields, armor cannot regenerate.

**b. Communications.** You can communicate during flight with any ship within range — taunting an enemy, sending instructions to your wingman or requesting permission to land. When you receive a message, a profile of the sender appears in the VDU and speech begins.

Follow these steps to send a message:

- |                      |               |   |
|----------------------|---------------|---|
| 1. (R) (B) (hold)    | (M) (hold)    | Display the communication screen in Left VDU. |
| 2. (←), (→)          | Hat (←), (→)  | Choose the receiving ship or pilot.           |
| 3. (←), (→)          | Hat (←), (→)  | Open the message menu.                        |
| 4. (←), (→)          | Hat (←), (→)  | Choose a message to send.                     |
| 5. (R) (B) (release) | (M) (release) | Send the selected message.                    |

To abort communications, choose the *Never mind* message.

You can "refuse" video messages from all ships by pressing (M) (C) (or (S) (C)).

### Wingman Orders

During flight, you can send orders or other messages. The keypad/joystick quick commands are available without accessing the communication screen. The joystick control appears to the right of the slash.

### Break and Attack

(V) (↑) / (S) (↑) (hat)

Tells your wingman to break formation and engage enemy ships.

### Attack My Target

(V) (↑) / (S) (↑) (hat)

Tells your wingman to engage the enemy you have currently targeted (if you gave the *Break and Attack* command earlier, or if your wingman already broke formation).

### Form on My Wing

(V) (↓) / (S) (↓) (hat)

Tells your wingman to return to formation and follow your ship (if you issued the *Break and Attack* command earlier, or if your wingman already broke formation).

### Check Status

(V) (→) / (S) (→) (hat)

Asks how much damage a friendly, targeted ship has taken. This message also works for capital ships.

### Return to Base

Tells your wingman to return to the *Victory* immediately. If he obeys, your wingman is not available for the rest of the mission.

### Help Me Out Here

(V) (←) / (S) (←) (hat)

Tells your wingman to engage an enemy attacking you.

### Keep Radio Silence

Prevents your wingman from talking to you.

### Lift Radio Silence

Allows your wingman to talk to you and breaks the *Keep Radio Silence* command.

### Enemy Taunt

(V) (→) / (S) (→) (hat)

(Enemies only) Insults a targeted enemy fighter. Taunting sometimes draws an enemy ship to you, luring it away from a friendly ship.

### Request Landing

(V) (↓) / (S) (↓) (hat)

(Victory/supply depots only) When you complete a mission and return to base, you must target the *Victory* and request permission to land.

## 5. RIGHT VDU

When you have a ship targeted, the Right VDU identifies the ship type, its range and its shield strength. If no ships are present, the VDU remains blank.

When ships (friendly or enemy) come into view, your onboard computer targets the closest ship. You know a ship is targeted when brackets appear around it and a cross appears on your radar (see **Targeting** on p. 23). Red brackets indicate enemy ships, blue brackets denote friendlies.

Once a ship is identified, its profile appears in the Right VDU. Thin blue lines indicate shield strength. These lines turn red and eventually disappear when you diminish your enemy's shields. When the targeted ship takes armor damage, sections of the profile flash yellow. When the damage is serious, the profile flashes red.

**Navigation Information.** When no targets are in view, text just above the Right VDU identifies your current navigational destination. For example, "DEST: Sweep 2" means that your current autopilot destination is the nav point labeled "Sweep 2." The distance to this nav point is given in kilometers. (See **Navigation**, p. 22, for additional information.)

## 6. GUN POWER INDICATOR

Tick marks in this gauge indicate the power level of your ship's active guns (location and color vary between cockpits). If you use guns frequently, the power level diminishes and the bar shortens. The more guns you fire at once, the faster you drain gun power. If you have no gun power left, your guns won't fire until some power is regenerated. Gun power is replenished if your generator isn't too damaged, and the bar grows longer as power is restored.

Once your power plant is destroyed, your guns will not recharge. You may want to eject — if you take many more hits, your ship will probably blow up.

## 7. AFTERBURNER FUEL INDICATOR

Tick marks in this bar show how much afterburner fuel you have, and they disappear as your tank empties. Using afterburners may help you get out of a dangerous situation or zero in on the enemy, but they burn fuel ferociously. If you run out of fuel, you'll coast on reserves at the ship's maximum cruising speed (which varies between ships).



## 8, 9. SPEED INDICATORS

Ships have two numerical speed indicators. Set speed (8) indicates the speed in kilometers per second (kps) that your ship tries to maintain on its own (comparable to the cruise control in a car). It changes if you accelerate or decelerate (but not if you fire afterburners). The current speed (9) shows how fast your ship is moving in kilometers per second. It changes when you change the set speed, turn sharply or use your afterburners.

Action	Keypad	Joystick
Accelerate	(B) ↑	(B) + push joystick ↑
Decelerate	(B) ↓	(B) + pull joystick ↓
Apply afterburners	(L) (R)	(C)

## 10, 11. ACTIVE GUN(S), ACTIVE MISSILE

Guns are multi-fire blasters that draw energy from your ship. Missiles are single-shot, self-powered munitions. Depending on what ship you are flying, you have different guns and missiles available.

Text describing the active missile and gun appears above the Left VDU. Whenever you switch gun or missile types, this text changes.



To change the active gun, press (L) (C) (or (S) + trigger). To change the active missile, press (L) (A) (or (S) (A)). Pressing these keys multiple times cycles through available guns or missiles.

If you're flying a ship with two or more guns, you can activate all of them at once by pressing (L) (C) (or (S) + trigger) until you see "Full Guns" above the Left VDU. Firing all your guns at once quickly runs down gun power.

To cycle through missile selections, press (L) (A) (or (S) (A)). The number to the right of the missile name tells you how many missiles of that type remain.

Action	Keypad	Joystick
Change active gun	(L) (C)	(S) + trigger
Change active missile type	(L) (A)	(S) (A)
Fire gun(s)	(C)	Trigger
Fire missile	(A)	(A)

## 12. AUTOPILOT LIGHT

The autopilot light (AUTO) is on the instrument panel, although its position varies between ship types. It remains dim if enemy fighters are present, but glows when it is safe to autopilot to the next nav point.

You can autopilot by pressing (L) (B) (hat ↑). You can proceed to the next nav point as long as no enemies or hazards are nearby. If you are able to autopilot, the autopilot light in the cockpit glows. If you try to autopilot when it isn't possible, you'll see "Hazard near" or "Enemies near."

*Note: When you're escorting transports, you must link with them before you can autopilot. Fly close to one of the transports until AUTO lights.*

Autopilot	(L) (B)	Hat ↑
-----------	---------	-------

## 13. MISSILE LOCK LIGHT

Once an enemy has locked a missile onto your ship, this light glows. (If the missile is in front of you, a green box will appear around it.) When this happens, you can release decoys to distract missiles that are chasing you. Once your missile lock light glows, press (R) (C) (hat ↓) to release a decoy. Then, afterburn away to get out of the path of the missile. Note that you have a finite number of decoys (all of which are identical). Text such as "Decoys (16)" tells you how many decoys remain.

Release decoy	(R) (C)	Hat ↓
---------------	---------	-------

## 14. JUMP LIGHT

The *Excalibur* has a jump engine that lets you travel through jump points. Listen to the mission briefings to find out which missions require jumps. Press (L) (B) (or hat ↑) to engage jump engines. (In the appropriate missions, you'll see JUMP instead of AUTO when it's safe to jump.)

Jump	(L) (B)	Hat ↑
------	---------	-------

## NAVIGATION

During flight, your current navigational destination appears in the viewscreen as a white cross (#15 in cockpit instruments illustration, p. 13). You also have access to a 3-D navigational map that shows all nav points. To display the map and temporarily pause play, press  $\triangleright/\text{II}$  (A) (or  $\text{P}$  (A)). Then, use  $\oplus$  to rotate the map in any direction.

The next navigational point appears as a white sphere. Completed nav points are blue, uncompleted ones are red. Text in each sphere describes that area, such as "Sweep 2." (This text also appears above the Right VDU.)

To choose a different navigational destination, press  $\text{L}$  or  $\text{R}$  (hat  $\leftarrow$ ,  $\rightarrow$ ).

To re-center the map on your current location, select the nav point labeled "Blair."

Action	Keypad	Joystick
Open nav map	$\triangleright/\text{II}$ (A)	$\text{P}$ (A)
Rotate map	$\oplus$	$\oplus$
Zoom out or in	(A) or (B)	(A) or (B)
Switch nav destination	$\text{L}$ or $\text{R}$	Hat $\leftarrow$ , $\rightarrow$
Exit map view	$\blacksquare$	(S)

## TARGETING

Your ship's targeting system automatically targets the closest ship and places red (enemy) or blue (friendly) brackets around it. As long as a ship is targeted, the Right VDU displays a profile of that ship, and the ship appears as a large cross on the radar. Text above the Right VDU describes the targeted ship type and its distance. You must have a ship targeted before you can fire Heat-Seeking, Image-Recognition or Vampire missiles, or torpedoes.

To cycle through multiple targets in your viewscreen, press  $\text{R}$  (A) (hat  $\leftarrow$ ,  $\rightarrow$ ) repeatedly. You can only target one ship at a time. As you switch targets, the brackets shift to another ship in your viewscreen.

Cycle through visible targets  $\text{R}$  (A) Hat  $\leftarrow$ ,  $\rightarrow$

*Note: A damaged enemy fighter may sometimes retreat to safer space during combat. If you notice an enemy moving out of range, let him go — you're better off concentrating your efforts on nearby fighters.*

## INERTIAL TARGETING AND TRACKING SYSTEM (I.T.T.S.)

All fighters employ the I.T.T.S., a system that calculates how much you must lead your target in order to maximize your chance of a hit. When your computer targets a ship, the I.T.T.S. places diamond-shaped red cross hairs near the ship whenever it is in sight. It takes into account the enemy's speed and current position and automatically computes the necessary "lead" needed. If you line your gunsight up with the diamond instead of the targeted ship, your gun shots are more likely to hit the target.

Once a target moves out of view, you should maneuver to bring it back into view.

## MISSILE LOCK

Depending on what ship you're flying, you have access to certain missiles. Most have their own locking mechanisms. Dumbfire and Friend-or-Foe missiles are an exception. (See pp. 33-38 in the *Victory Streak* manual for specific missile information.)

If you have a missile selected that requires a lock and a targeted ship comes into view, green cross hairs appear outside the targeting brackets. They move toward the center of the brackets. Keep the target in view. When the brackets close in on the target, you'll hear a missile lock tone. This means you can fire your HS, IR or Vampire missile, or torpedo.

Missiles will remain locked until fired or until the targeted ship moves out of view.

If an enemy has fired a missile at your ship, the missile lock light (13) in your cockpit glows. See **Missile Lock Light** (p. 21) to learn how to use decoys.



## DAMAGE

During battle, your ship may take damage from gun or missile hits.

A text description of damaged ship components displays on the left side of the viewscreen (such as "Ion drv light"). Completely destroyed systems cannot be repaired. When your engine takes 100% damage, your ship explodes.

The color of the text varies as follows:

Yellow	System has light damage
Orange	System has moderate damage
Red	System has heavy damage
Gray	System is destroyed

## EJECT WARNING

Whenever your ship has taken critical damage, you'll hear an eject warning. When this happens, you must decide how serious the situation is and whether to eject. If you decide to eject, press  $\text{A}$   $\text{B}$   $\text{C}$  (or  $\text{S}$   $\text{P}$ ). The Confederation will lose a fighter craft, and Eisen will chew you out. But you'll probably live to carry on the war.

Eject  $\text{A}$   $\text{B}$   $\text{C}$   $\text{S}$   $\text{P}$

## TAKEOFFS AND LANDINGS

All takeoffs and landings are automatic. Whenever you start a mission by selecting "Fly Mission" in Flight Control, your ship launches into space.

Before landing, you must obtain permission (described below). Then, you land automatically.

To get permission to land, bring the *Victory* into view. Then, press and hold (R) (B) (or (M)) to display the Communications screen in the Left VDU.

1. (R) (B) (hold)      (M) (hold)      Display the Communications screen in the Left VDU.
2. (↑), (↓)      Hat (↑), (↓)      Highlight VICTORY as the receiver.
3. (←), (→)      Hat (←), (→)      Open the message menu.
4. (↑), (↓)      Hat (↑), (↓)      Highlight NEED CLEARANCE.
5. (R) (B) (release)      (M) (release)      Send the message.
6. Wait for "You are clear to land." Your ship will kick into autopilot mode and land on its own.



## CLOAKING

Later in the game, the experimental *Excalibur* fighter is equipped with a defensive cloaking mechanism that makes it invisible to other ships for a short period of time. This device is loaded onto a missile hardpoint. To activate cloaking, press (L) (A) (or (S) (A)) to cycle through missiles until you see *Cloaking Device* above the Left VDU. Then, press (A) to activate cloaking. Once you cloak, your ship temporarily disappears from view and from your enemy's radar screen.

While cloaked, you cannot fire missiles or guns. Any enemy missiles that are already locked onto your ship will remain locked until you're completely cloaked. After you're invisible, enemy missiles cannot initiate or maintain a lock on your ship.

*Note: You can cloak only in one specific series of missions.*

Cloak	(L) (A), then (A)	(S) (A), then (A)
Cancel Cloak	(A)	(A)

## DYING

If you sustain severe damage in flight and die, a plaque displays:

A-RESTART	Return to the cockpit and take off again with the same ship/loadout.
C-FUNERAL	View funeral scene, then return to saved game screen.



## MAIN TERMINAL OPTIONS

A Main Terminal monitor on each level lets you save and load games, as well as adjust music, sound and language. Select a terminal to activate it.

**LOGOFF.** Return to the normal game screen.

**DUTY LOGS.** Save/load/delete up to five games. Select the button function you wish to perform, then select a game slot on the right side of the screen. (See p. 4 for specific instructions on saving, loading and deleting games.)

To return to the Main Terminal screen, select the Confederation star. All changes you make are included in saved games.

**CONTROLS.** Adjust music, sound and subtitles. Again, choose the Confederation star to return to the Main Terminal screen.

**Music volume, Sound volume, Ambience volume.** Increase/decrease music, sound and ambient (background) sound volume. Select the left arrow to decrease volume, the right arrow to increase it. The volume levels range from 0 to 9.

**Descriptions.** Toggle text descriptions of action spots ON/OFF (such as *Talk to Hobbes*).

**Transitions.** Cycle through cinematic transition options. Choose between NO SPACEFLIGHT/NO SHIPBOARD/NONE/ALL. This doesn't mean that spaceflight or gameflow is eliminated from the game — it means that you won't view some scenes (such as doors opening and closing, or launch and land sequences).

**Subtitles.** Cycle through speech subtitle options: FRENCH/GERMAN/ENGLISH/OFF.

**Joystick Configuration.** Toggle between LEFT-HANDED/RIGHT-HANDED joystick configurations. This switches (M) and (P), as well as (A) and (C).

**Invulnerability.** Turn invulnerability ON/OFF for your ship. When ON, you can't die.

To return to the Main Terminal screen, select the Confederation star in the upper right corner.

## GETTING THE MOST OUT OF WING COMMANDER III AUDIO

Origin's audio engineers have encoded the cinematic audio in *Wing Commander III* with a special process called Dolby Surround Sound. With four speakers and a Dolby Surround compatible amplifier/receiver, certain sound effects become more lifelike and place you in the center of the action.

To fully enjoy the surround effects, you need a left speaker, right speaker, center channel speaker and one rear speaker placed at ear level directly behind you. With Dolby Surround active, sound effects originate from the left, right and rear channel speakers, while most voices come from the center speaker.